



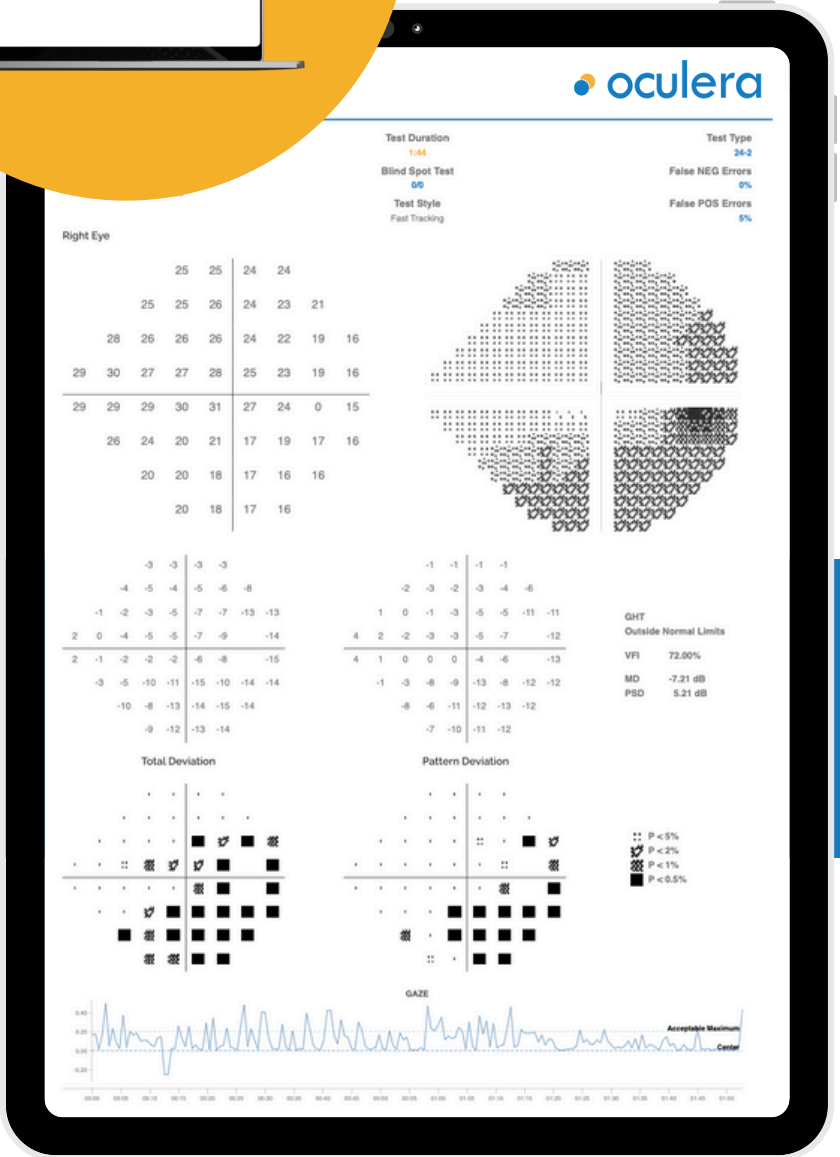
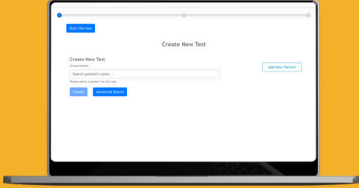
 **oculera**

**VIRTUAL REALITY  
VISUAL FIELD ANALYSER**



# TEST SCREEN

Access Test Results  
Anywhere, Fully Mobile!



# OCULERA VISUAL FIELD ANALYZER

Oculera is transforming eye care with its VR Visual Field Analyzer, a Class IIa medical device that modernizes ophthalmic diagnostics. Oculera VFA increases patient comfort, reduces costs, and adheres to the golden standards of perimetry.

## FEATURES

- 10-2, 24-2, 30-2, C-40, FF-120
- Binocular Tests (Esterman)
- GPA (Glaucoma Progression Analysis)
- FP, FN, Fixation Loss
- MD, PSD, GHT, VFI Parameters
- Automatic Eye Tracking
- Online and offline usage
- **Class IIa CE Certified Medical Device**

## ADVANTAGES

No need for eyepatch • No need for dark room • Only 500 grams  
Portable • Fully ergonomic • Fully digital

**100.000+ tests performed, leading the innovation!**





**For more information about sales and  
technical details, please contact us:**



[www.oculara.health](http://www.oculara.health)



[dist@oculara.health](mailto:dist@oculara.health)